

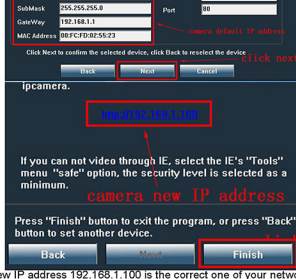
IP CAMERA MANUAL

All manual and software download
<http://www.yucvision.com/camhi-en.html>



YUCHENG/ESUNSTAR
 Shenzhen Esunstar Technology Co., Ltd.
 Skype:hkccv2008@outlook.com
 Email: service@esunstar.net
 website:www.esunstar.net

1



Now camera new IP address 192.168.1.100 is the correct one of your network.
 Note: our camera default IP address is 192.168.1.88, it will work if your network gateway is 192.168.1.1, then you do not need to change camera default IP address, otherwise you need to use search tool software to change camera IP address to the correct one.

2. Install PC client software. (PC client software is used for accessing your camera at local network, it is attached in Mini CD manual file named "PC Client_Setup")

PC Client_Setup.

3. access camera on PC client software. Double click IPC client software icon

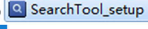


3

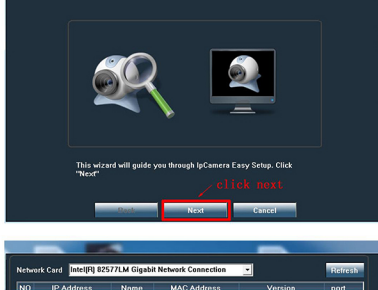
Wired connection Camera Quick Setup Guide

Connect camera to router or switch with Ethernet cable, plug in power supply, make sure camera and PC are both at the same network.

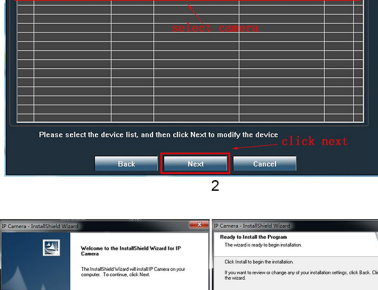
1. Install and use search tool software to detect camera. (search tool software is attached in mini CD manual file named "SearchTool_setup")



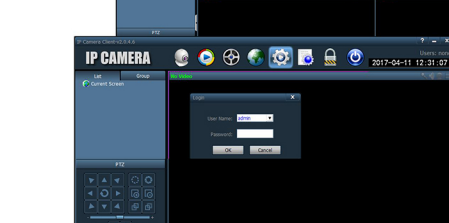
Double click search tool software icon



2

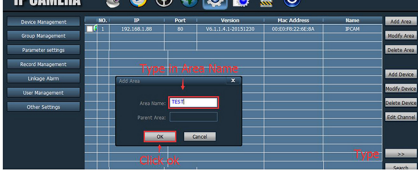
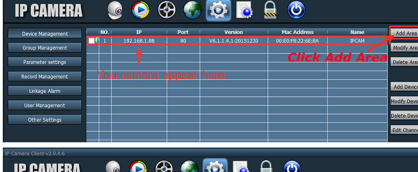


3. access camera on PC client software. Double click IPC client software icon

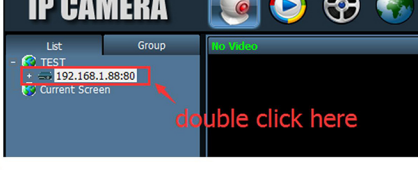
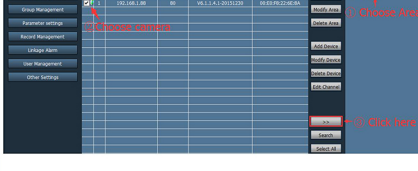


Note: PC client software user name is admin, no password, nothing need to type in.

4



5

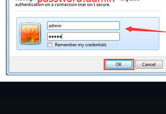


6

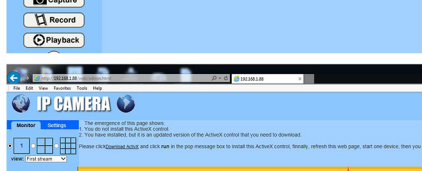
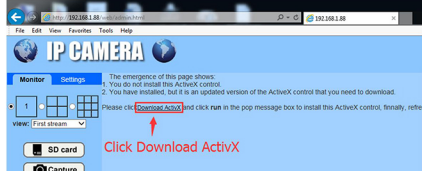


Internet explorer connection Setup Guide

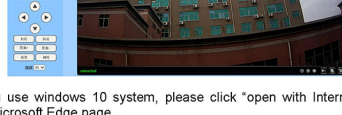
type in camera IP address 192.168.1.88 on IE and click enter.



7



8

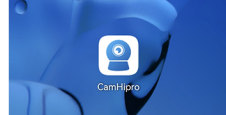


note: If you use windows 10 system, please click "open with Internet Explorer" on Microsoft Edge page.

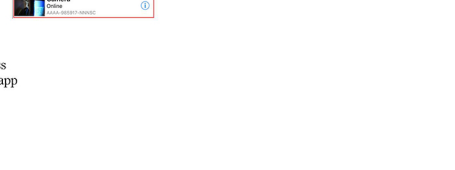
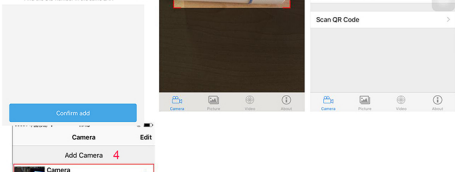


How to Add IP Camera on CamHi

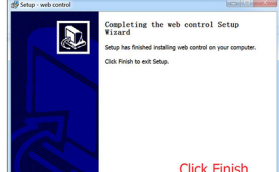
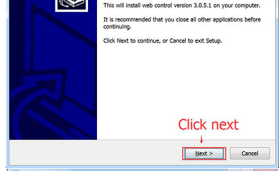
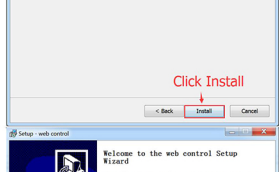
1. Make sure camera is connected to router by cable or WiFi, also you can access camera on IE or our PC client software, then install app CamHi on your phone, app CamHi is both for Android and iPhone.



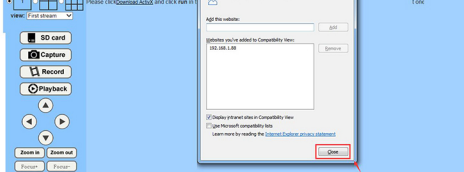
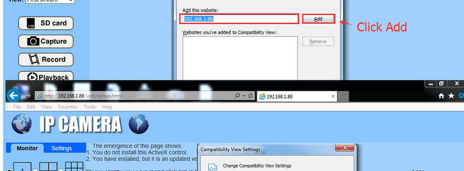
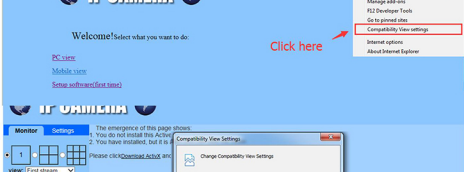
9



10



11



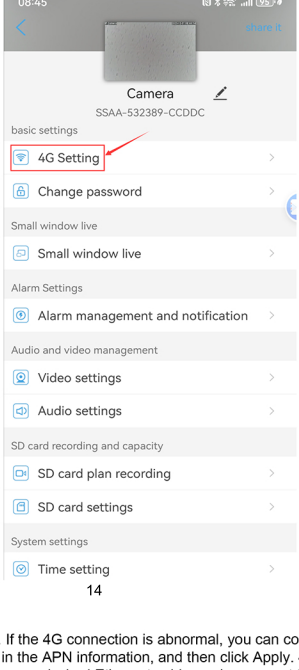
12

How to connect camera via 4G

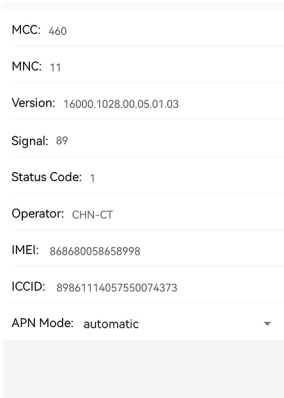
Disconnect the power adapter, insert a 4G SIM card, and then reconnect the power adapter. Open the app again: Click the "Setting" button to enter the APP settings page, find "4G Setting", and click to enter the 4G settings page.



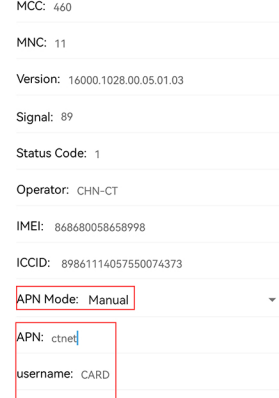
13



14



15



16