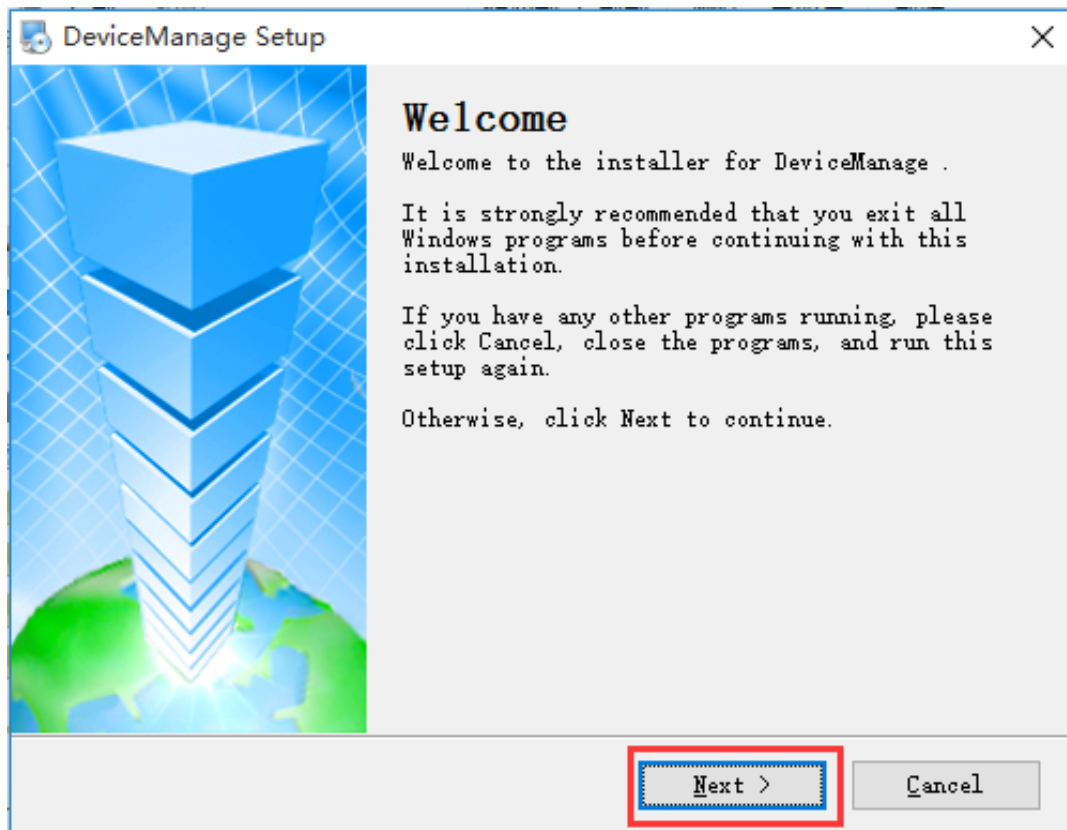
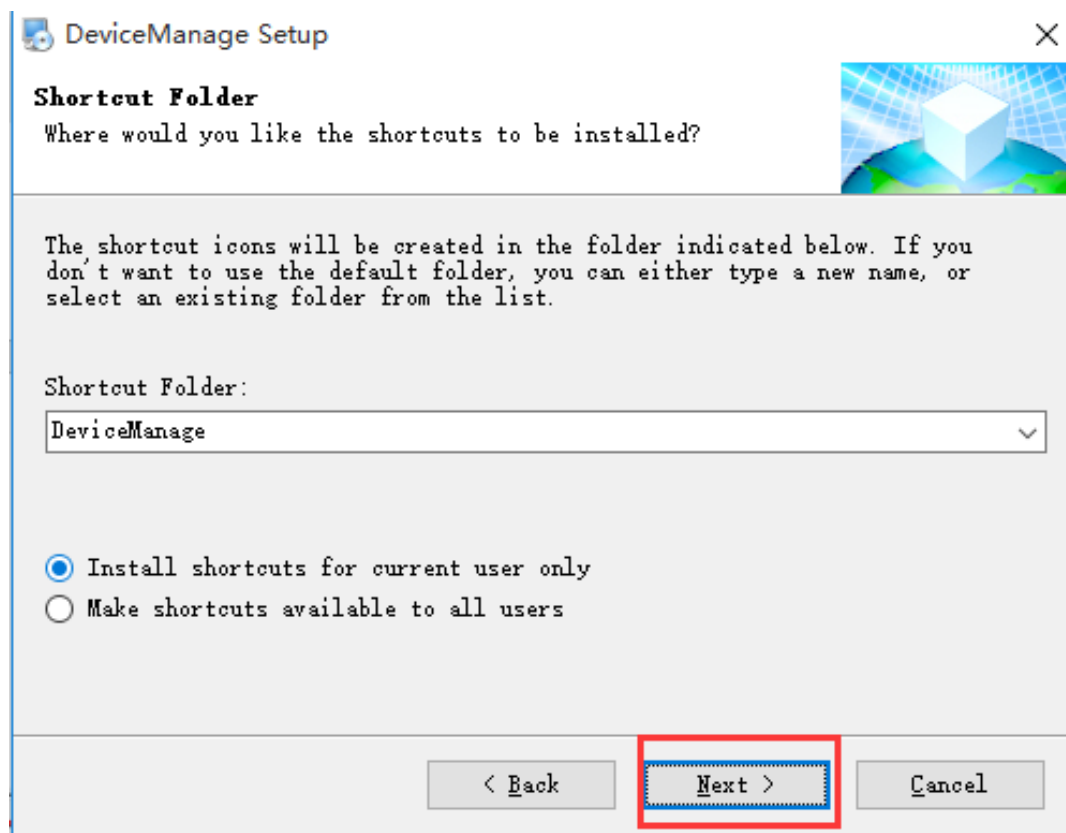
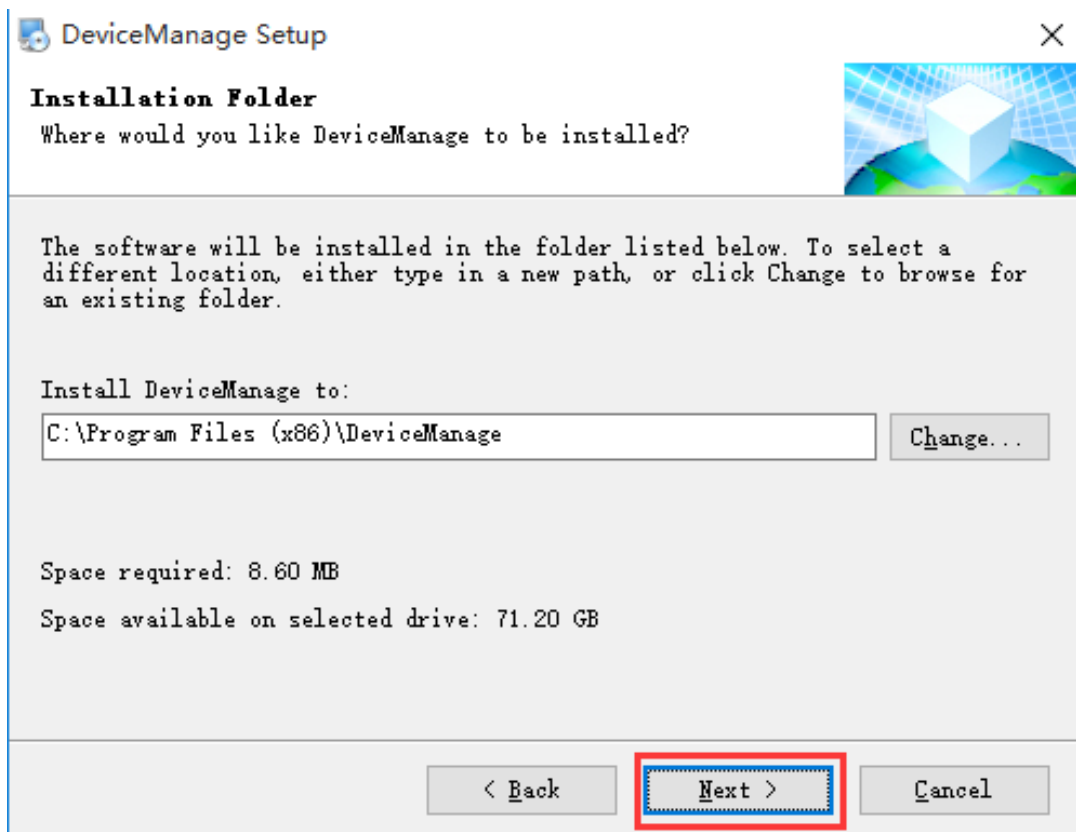
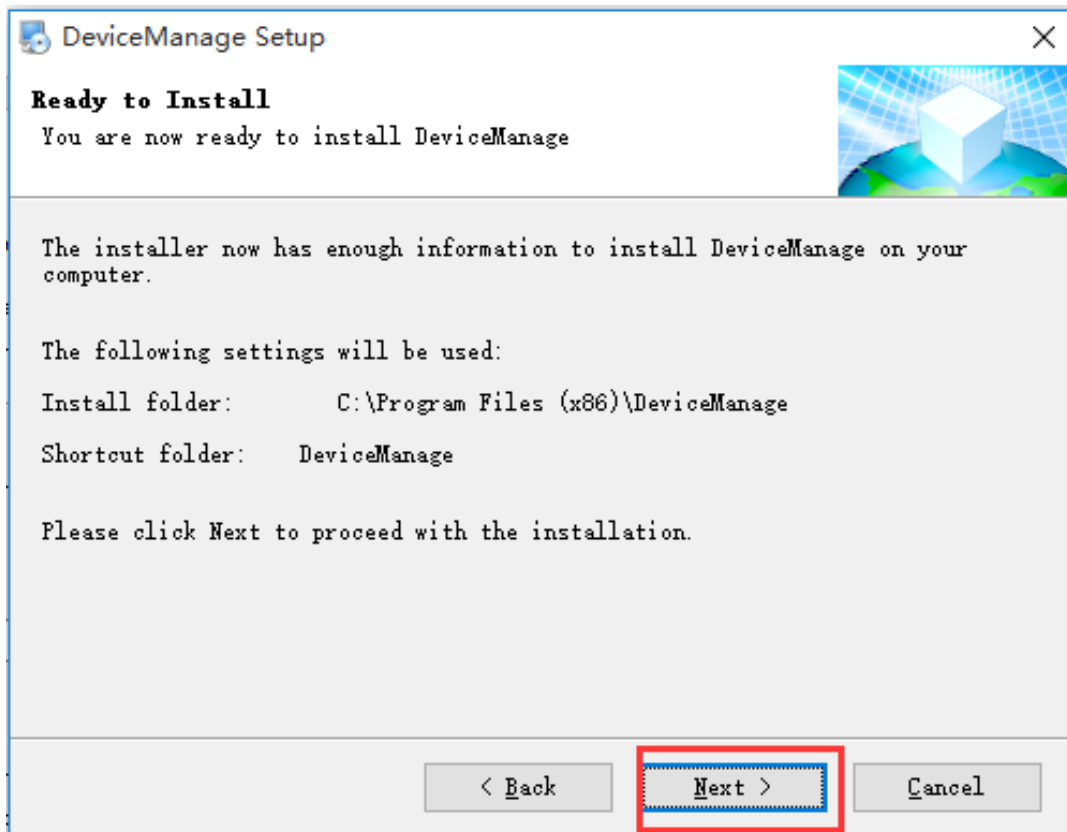



# How to Add PTZ IP Camera Manually

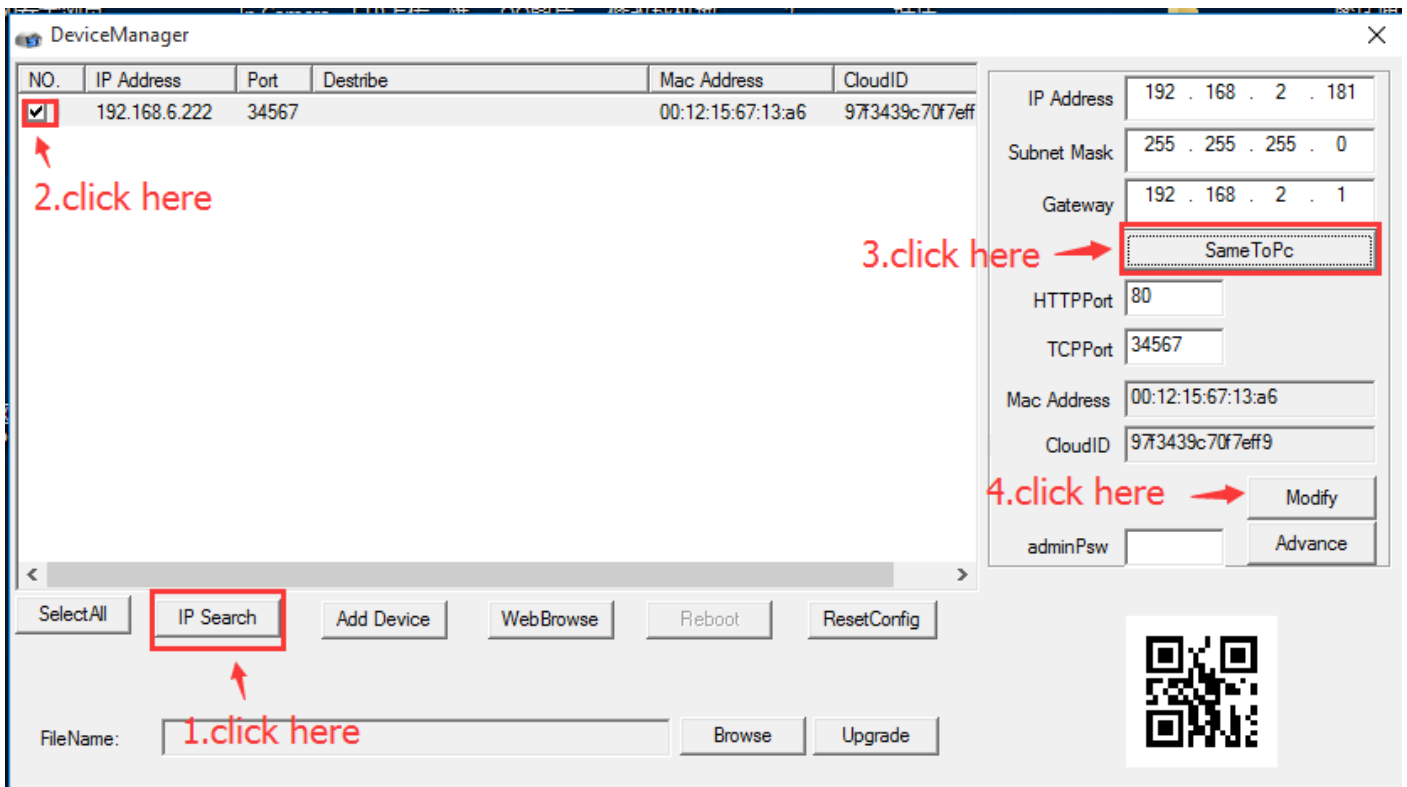
1, Connect power supply to camera, also connect Ethernet cable from camera to router or switch, then install the following software.



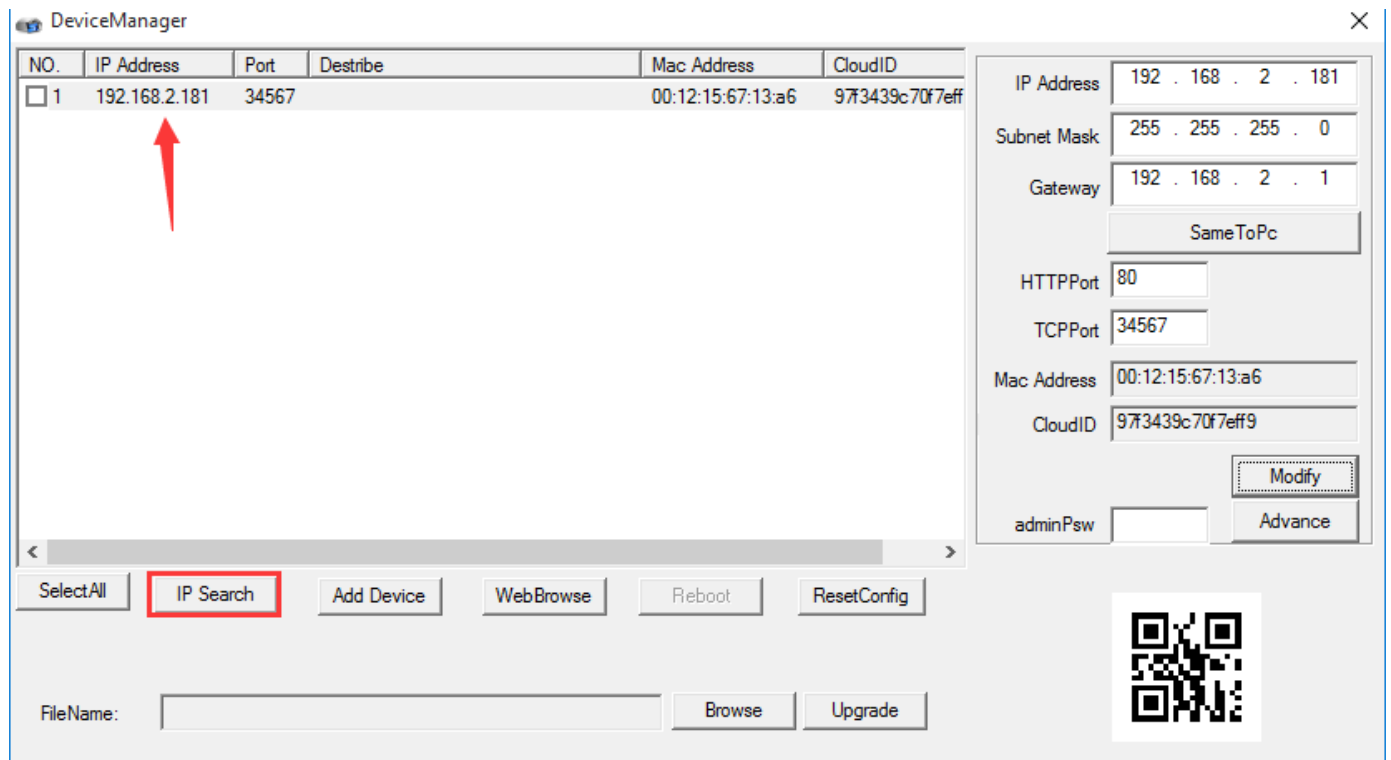




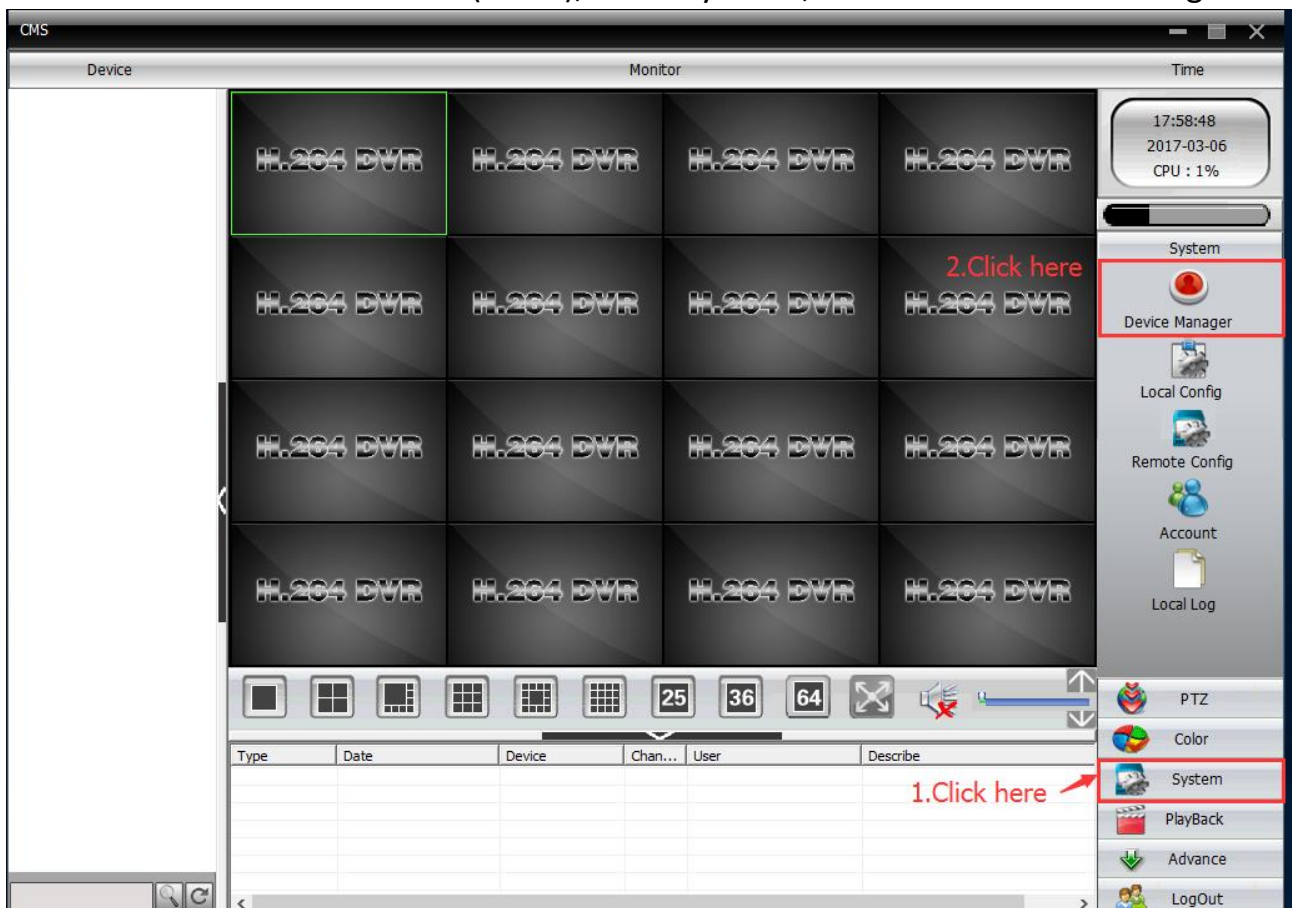
2, Double click DeviceManage software icon , then click "IP Search" button, you see 192.168.6.222 is the PTZ IP camera address, select this IP address, click "SameToPc" button, last click "Modify".



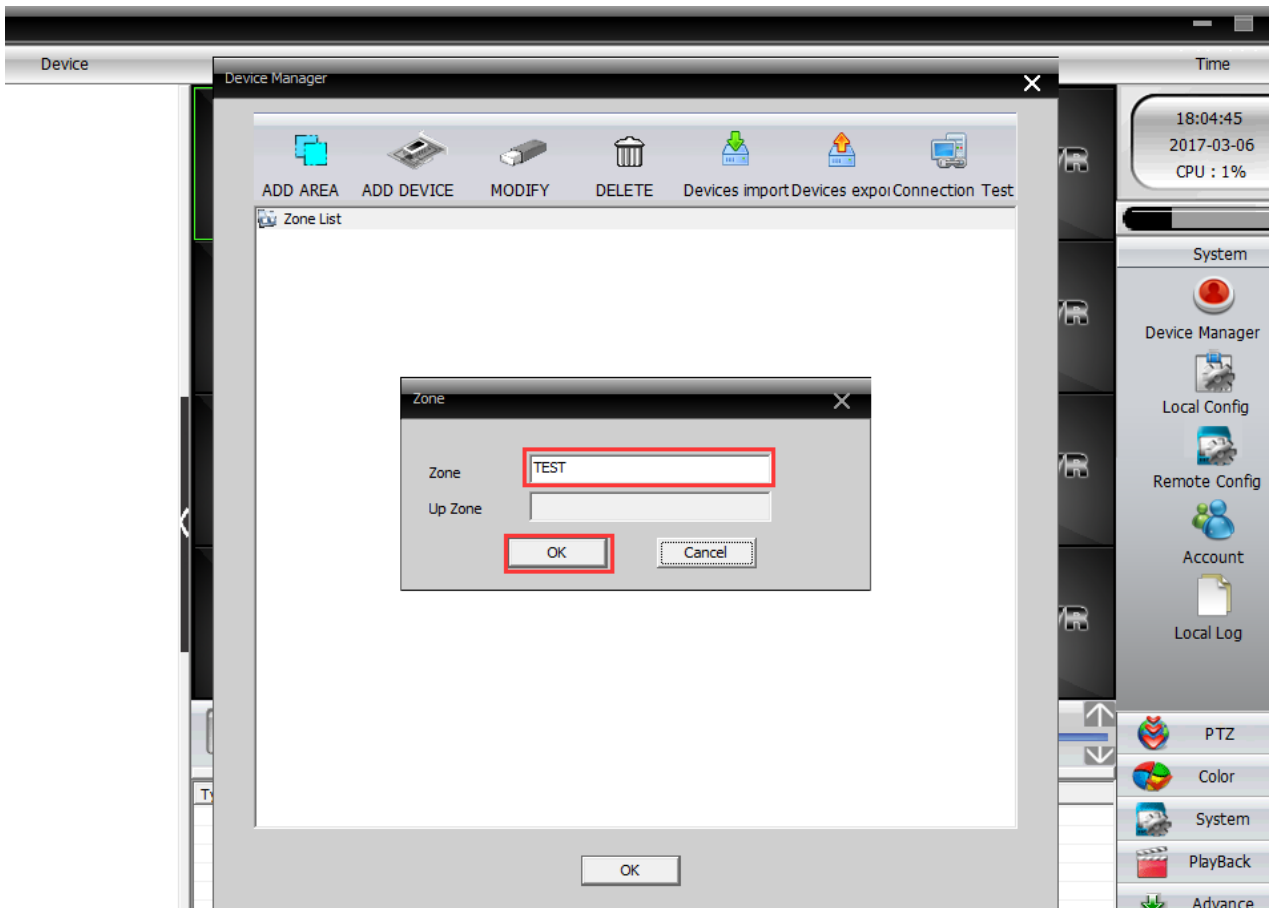
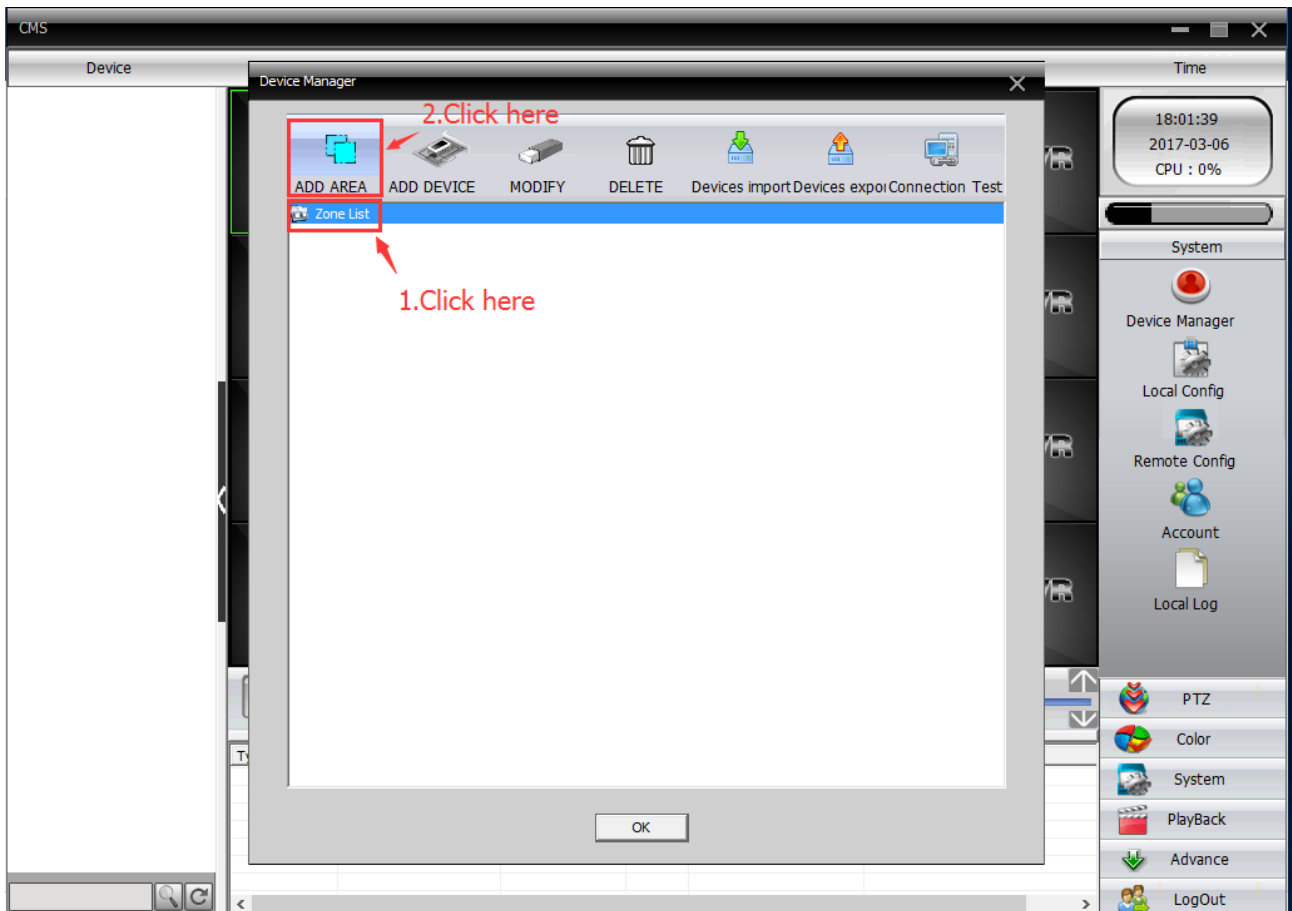
3, click "IP Search" button again, now you see PTZ IP camera new IP address is 192.168.2.181.

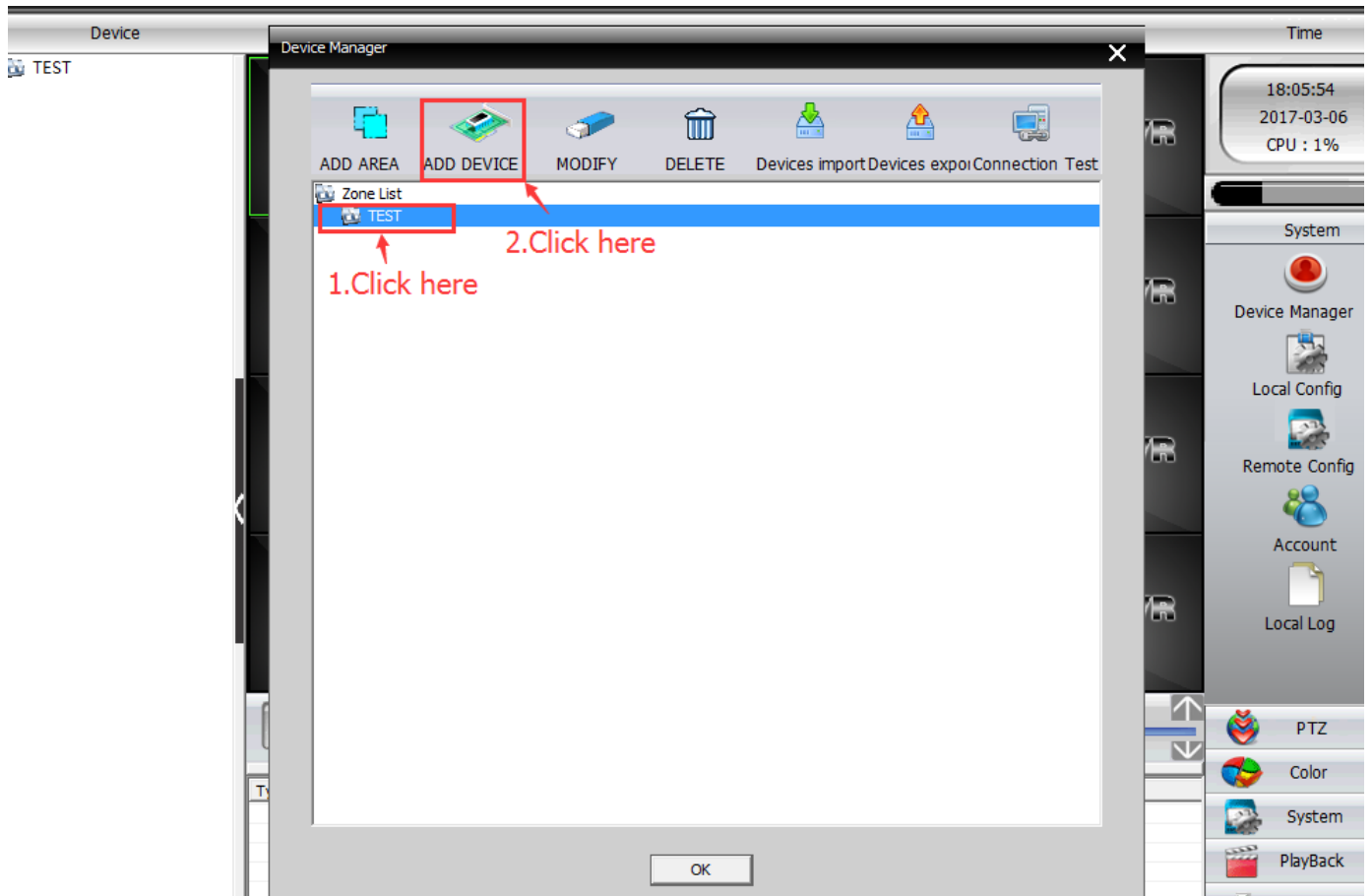


4, Double click CMS software icon (CMS), click "System", then click "Device Manager".

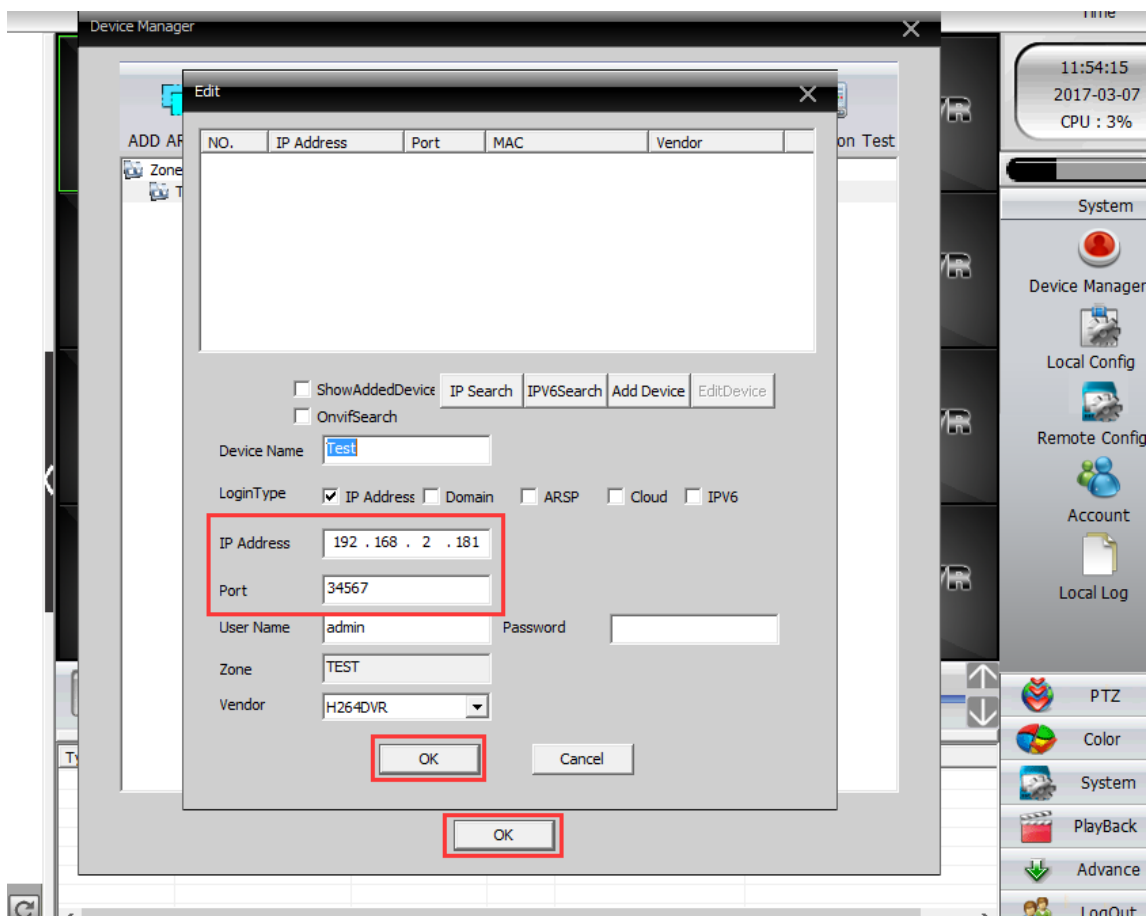


## 5, Add area and camera.





6, Input PTZ IP camera new IP address, port 34567, Vendor H264DVR, user admin, no password. Last click "OK".



7, Added camera successfully.

The screenshot displays a CMS interface with the following components:

- Top Bar:** CMS, Device, Monitor, Time (18:09:40, 2017-03-06, CPU: 10%).
- Left Sidebar:** TEST, Test, CAM01.
- Main Area:** A 4x4 grid of camera feeds. The top-left feed shows a live video of a building. The other 15 feeds are black with the text 'H.264 DVR'.
- Right Sidebar:** PTZ controls (directional arrows, zoom, focus, iris, pan), Preset (01), Tour (01), and a menu with PTZ, Color, System, PlayBack, Advance, and LogOut.
- Bottom Bar:** View icons (1, 4, 9, 16, 25, 36, 64), a hand icon, and a scroll bar.
- Log Table:**

Type	Date	Device	Chan...	User	Describe
Video	2017-03-06 18:09:35	Test	1	admin	Connect successful