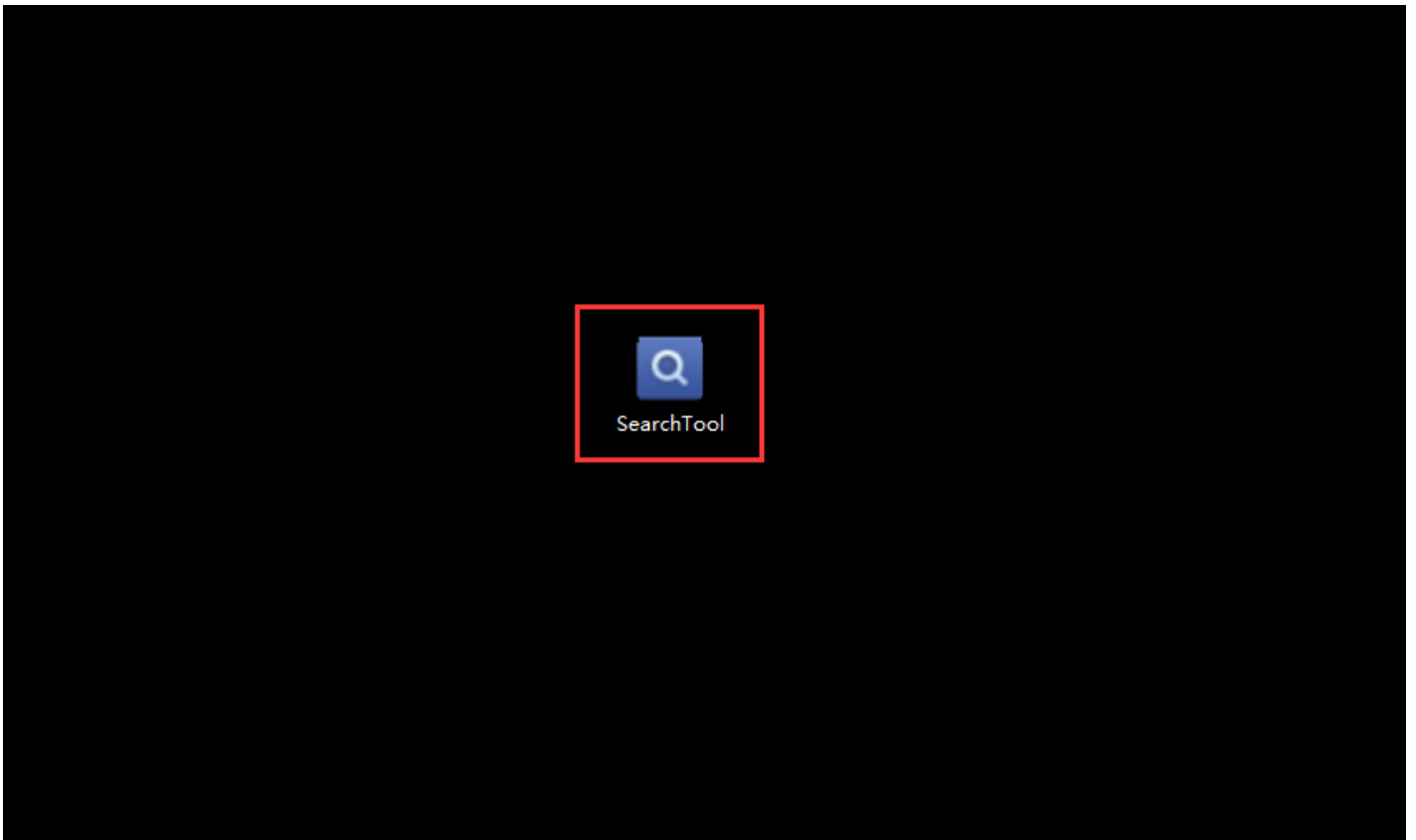


## How to Setup IP Camera Fixed IP address

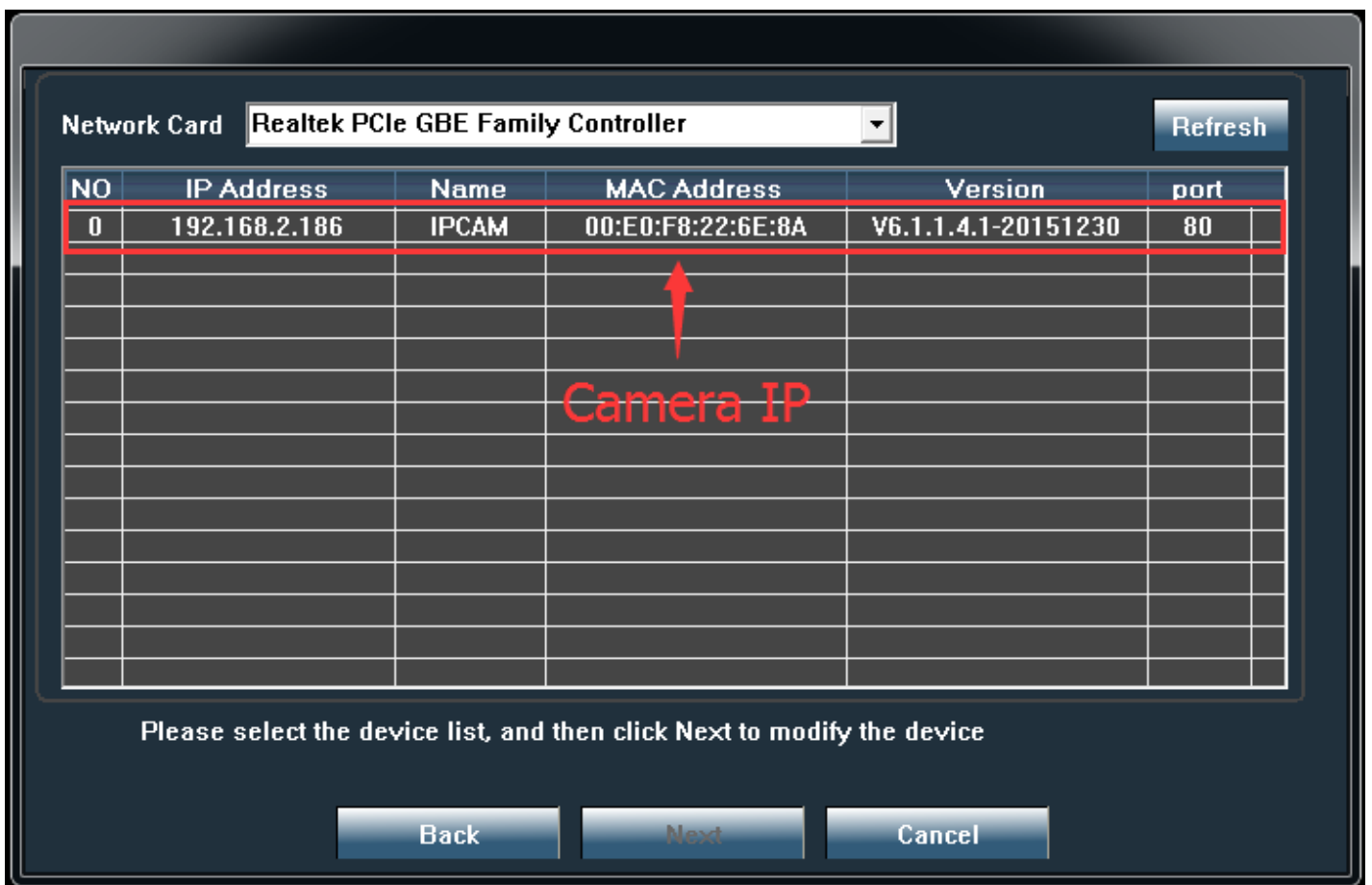
1, Install and run SearchTool software on your PC.



2, Click Next



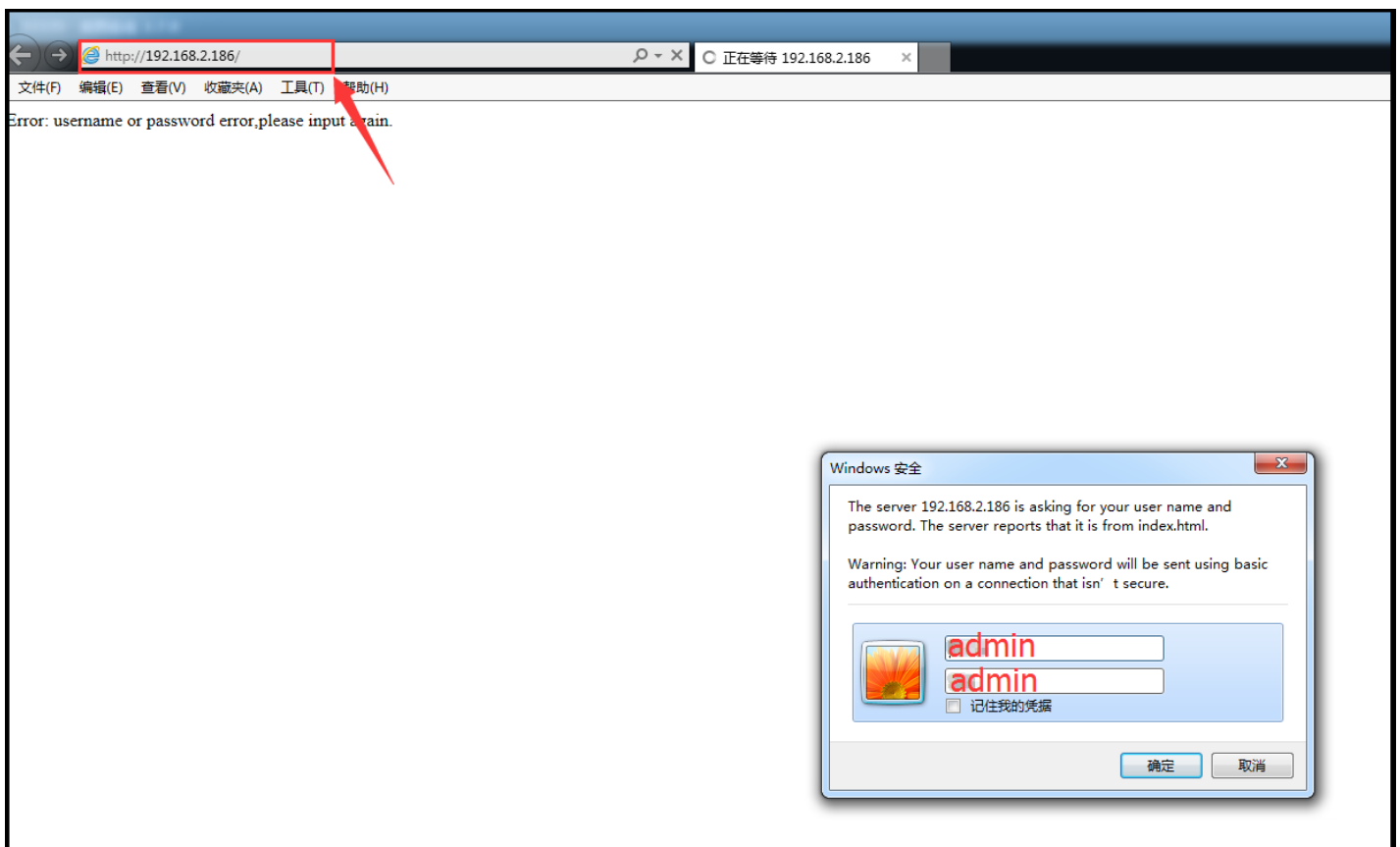
3, Click Refresh to find camera IP address.



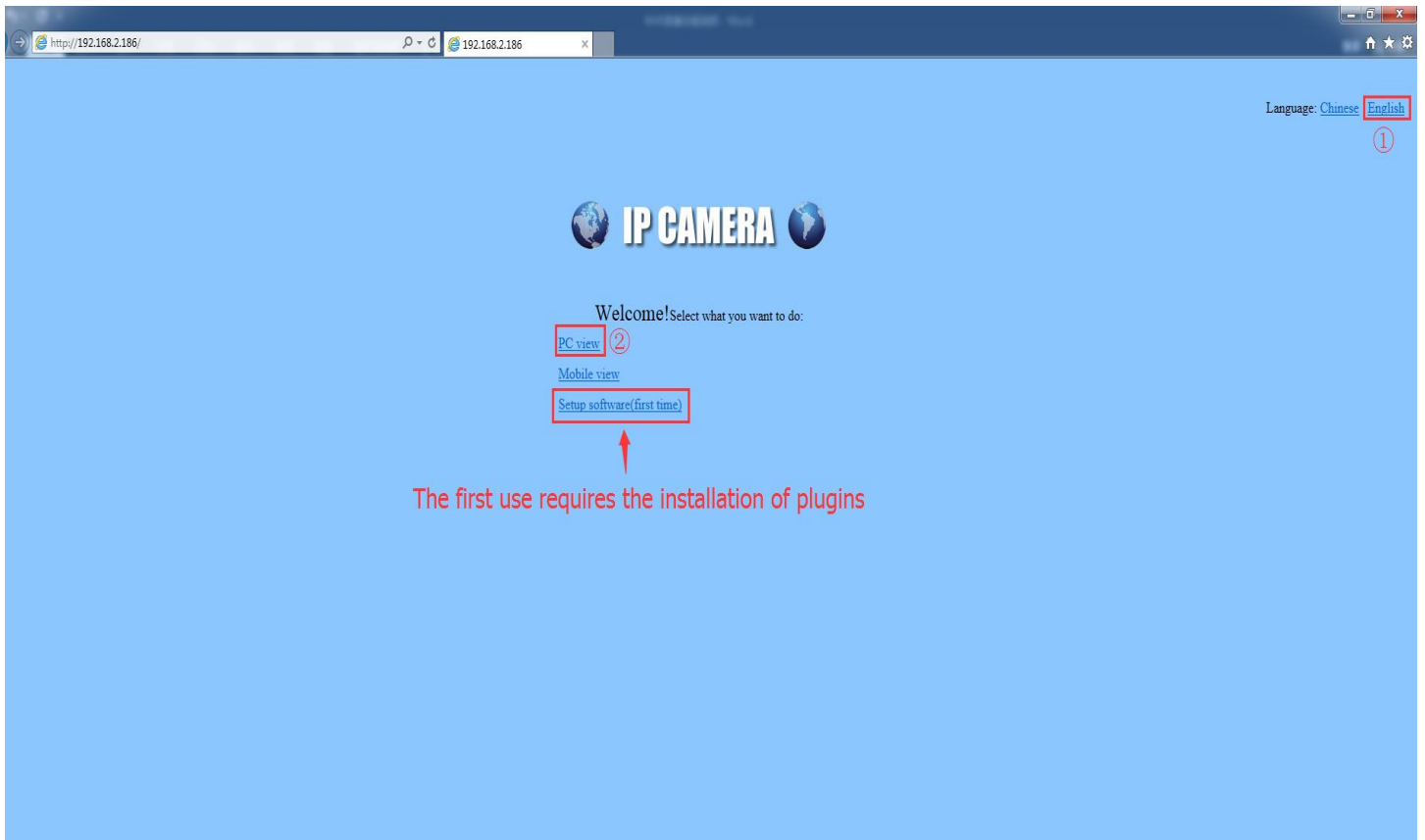
4, Open Internet Explorer, type in camera IP address, click search.

Username: admin

Password: admin



5, Choose English language, click PC view (you need to install Active X plug in when first use)



6, Settings—NetWork—network page, select Fixed IP Address.



7, You can change IP address then click Apply.

The screenshot shows the 'Settings' page of an IP camera web interface. The browser address bar shows 'http://192.168.2.186/web/admin.html'. The page title is 'IP CAMERA'. The left sidebar contains navigation links: Monitor, Settings, Media, Network, Network, Wireless, Ddns, Platform, ONVIF, P2P, Alarm, Advanced, and System. The main content area is titled 'LAN Settings' and contains the following fields:

- IP Configuration Type: Fixed IP Address (dropdown)
- IP address: 192.168.2.186
- Subnet mask: 255.255.255.0
- Gateway: 192.168.2.1
- DNS Configuration Type: Manual DNS (dropdown)
- Primary DNS: 192.168.2.1
- Secondary DNS: (empty)
- HTTP Port number: 80 (80 or 1024~49151)
- RTSP Port: 554 (554 or 1024~49151)
- Rtmp: 1935
- RTSP Permission check:  On  Off (Note: Modify the settings, reboot the device)

Below the settings are two buttons: 'Apply' and 'Cancel'. A red arrow points to the 'Apply' button with the text 'Click Apply'. A red text annotation on the right side of the settings area says 'You can modify the ip you want'.