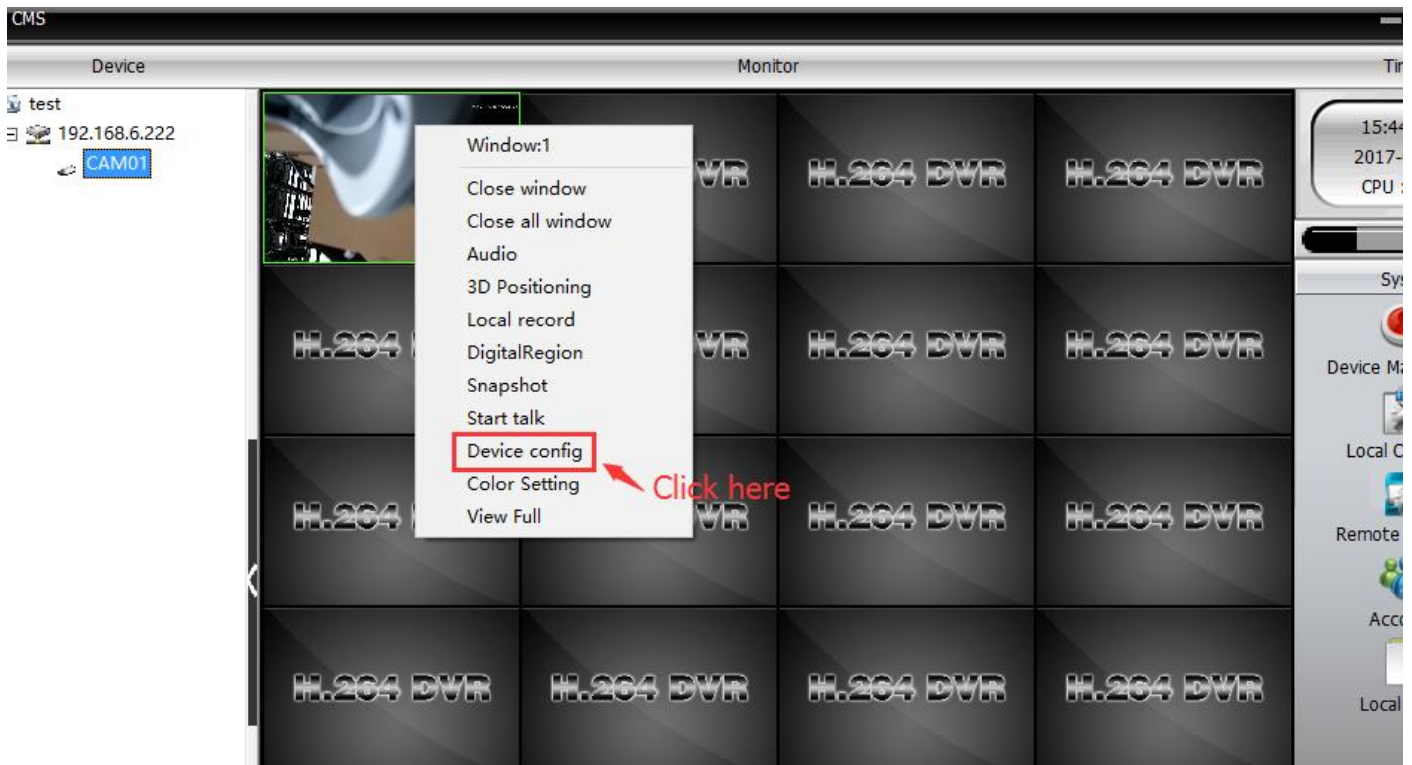


How to Setup PTZ IP Camera WiFi Parameters

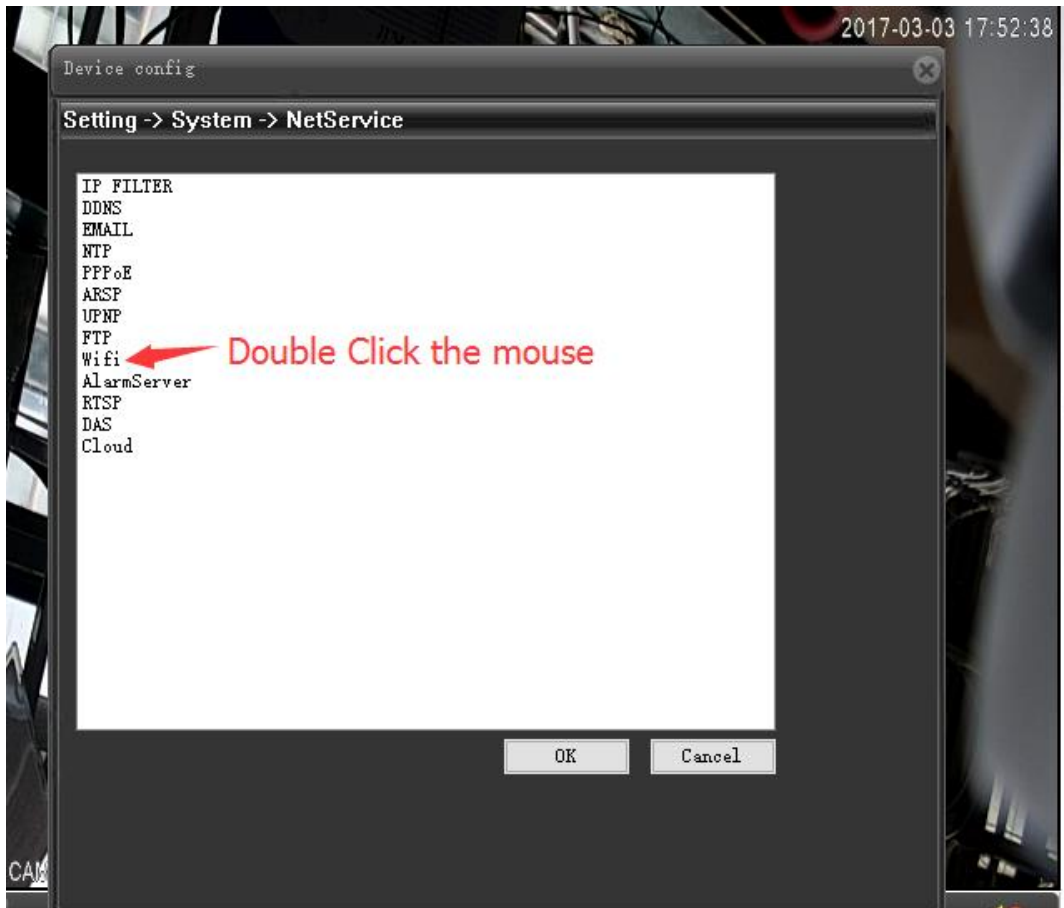
1, Log in CMS software to manage your camera, click mouse right button on image, then click Device Config option.



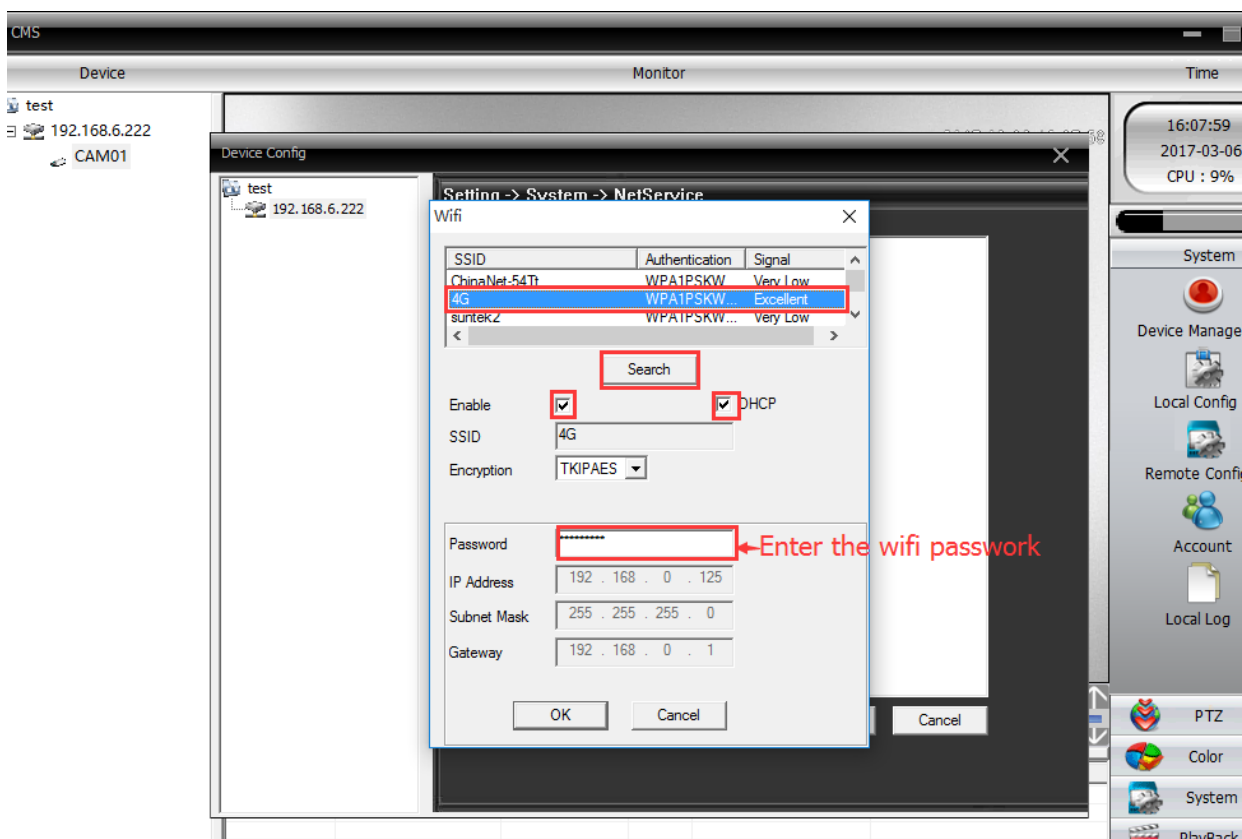
2, Settings---System---NetService.



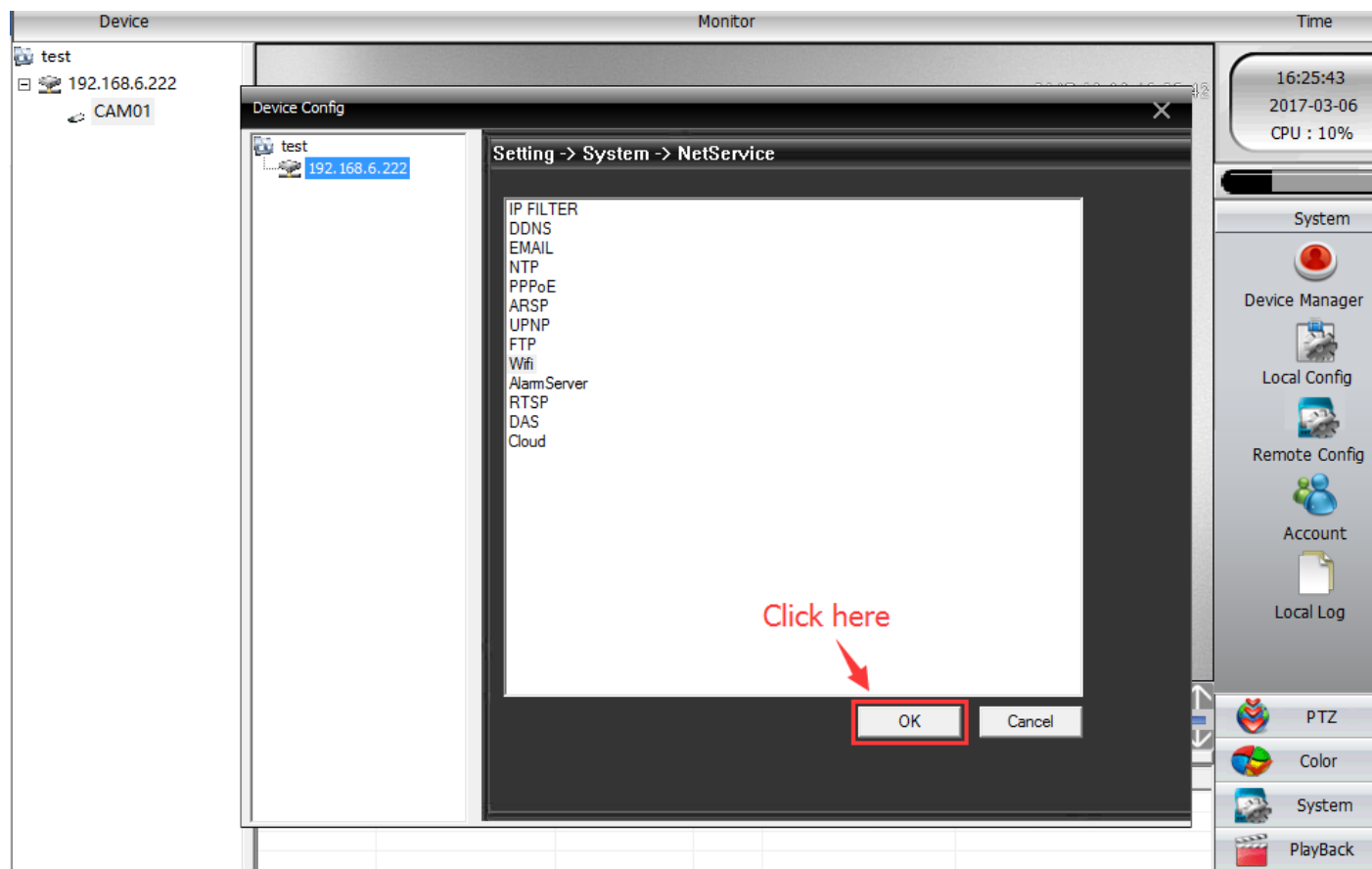
3, Double click mouse left button on WiFi option.



4, Open Enable and DHCP, click Search button to start searching your home WiFi SSID, then choose correct home WiFi SSID, Input your home WiFi password, last click OK.



5. Click OK again.



6. Now your camera is connected by WiFi signal, you can remove Ethernet cable.