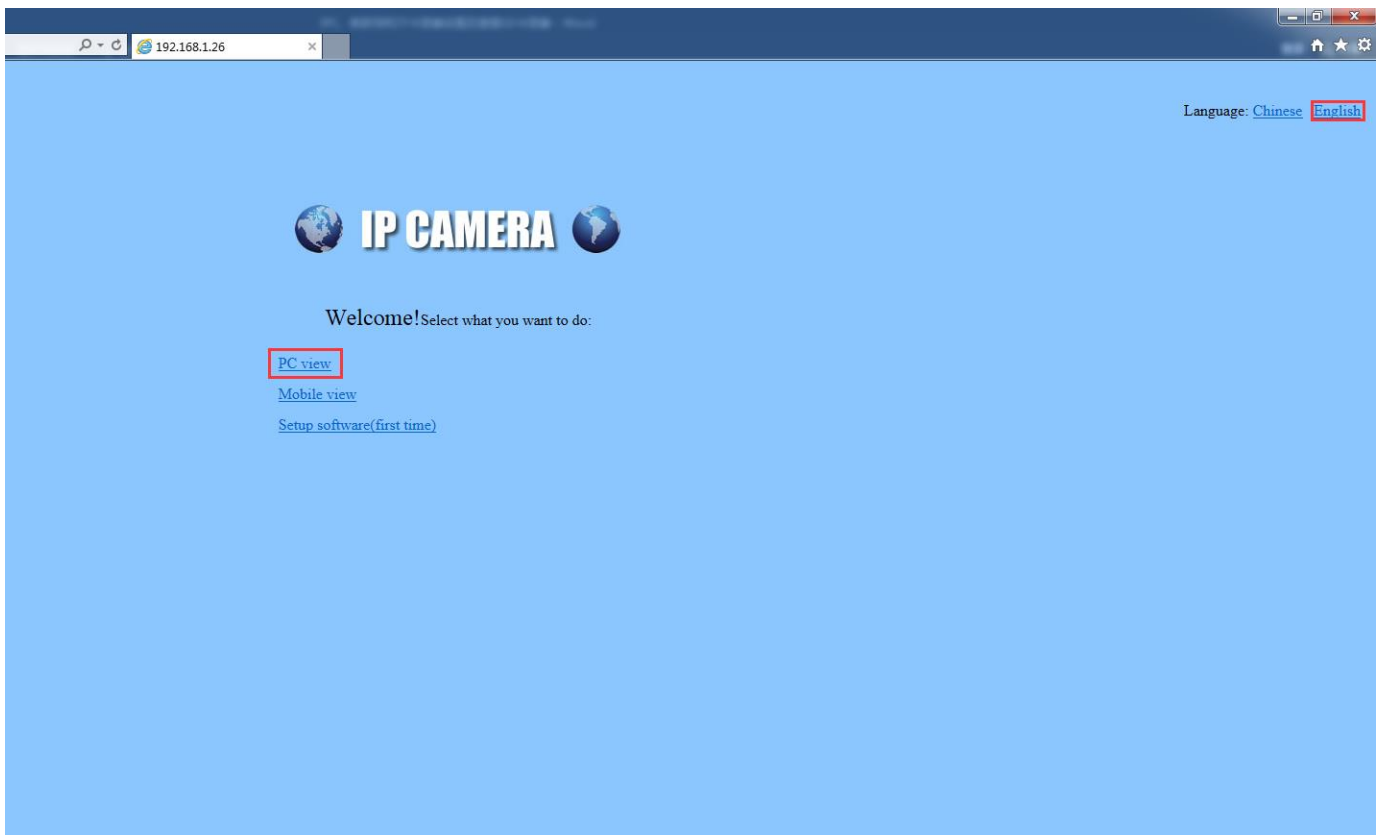
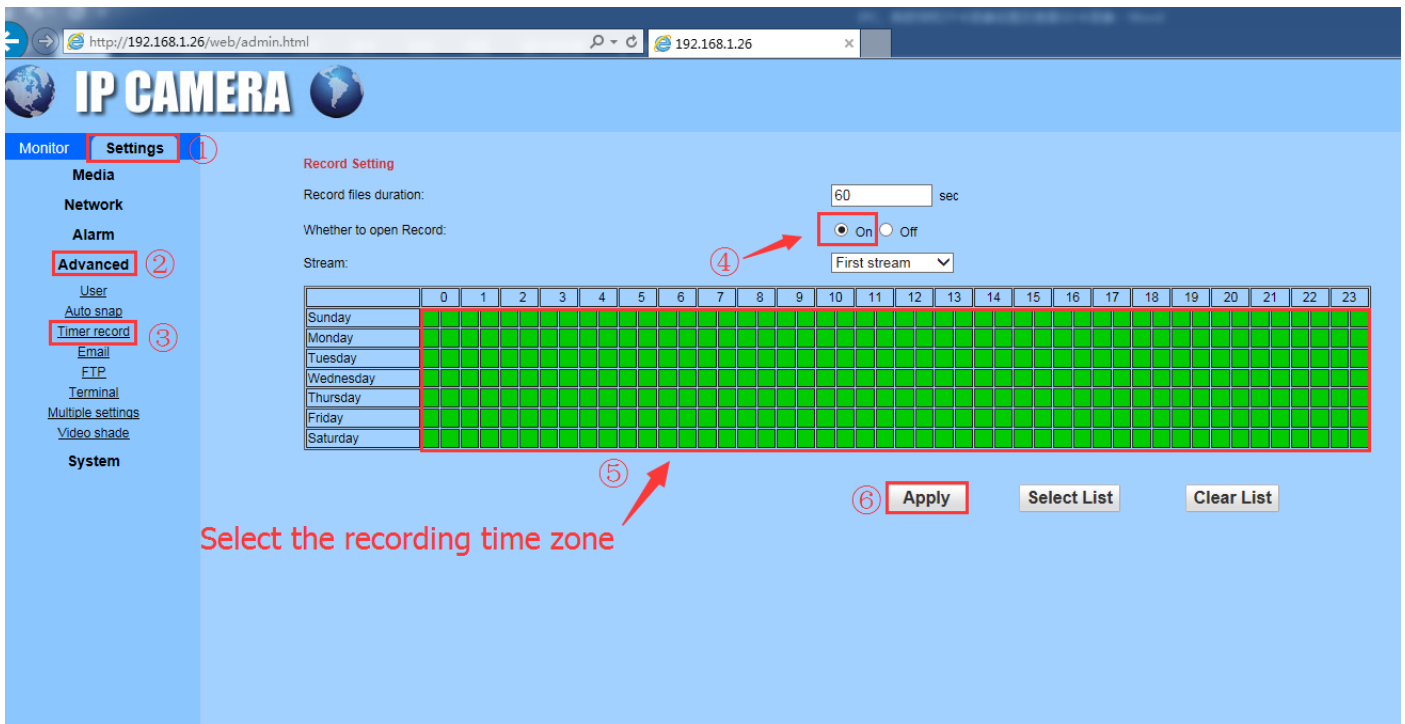


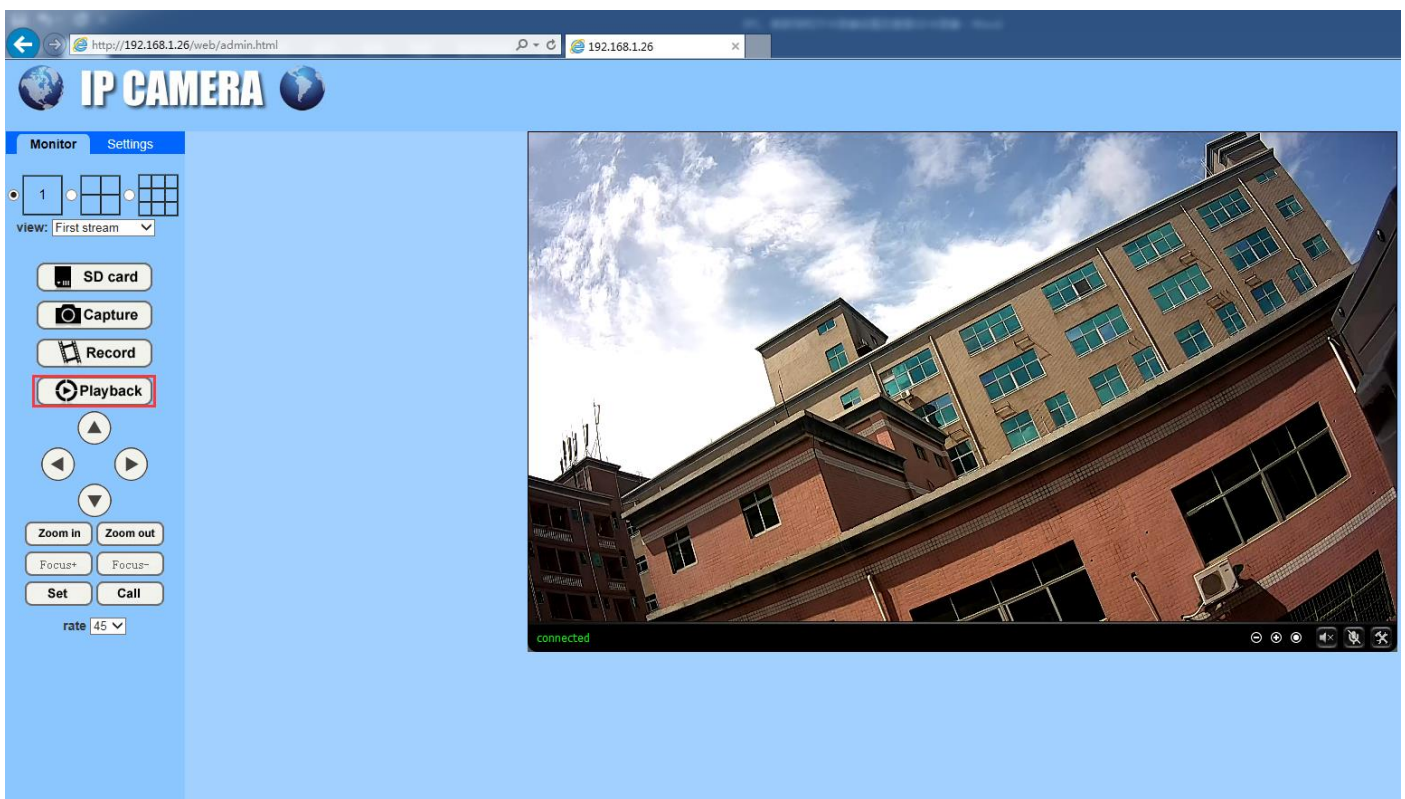
1, Open IE browser, type in camera ip address---Search---English---PC view, type in camera username and password. (Note: you need to format your SD card when you use it at first time)



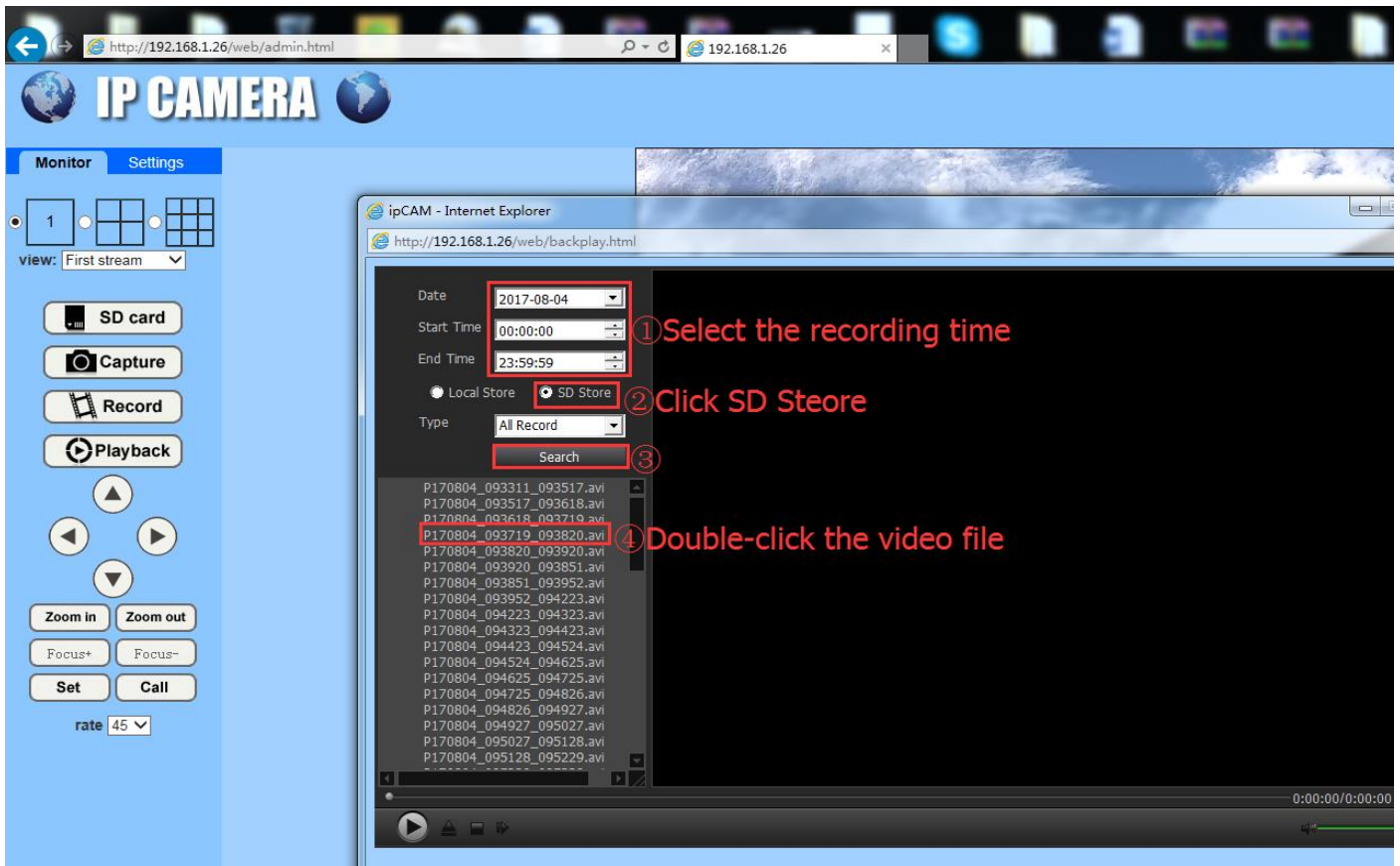
2. Set up Timing record (open by default) : Settings - Advanced - Time Record, Click On Select Record Video time zone(It is green that you have selected the record time) then go to save and can exit



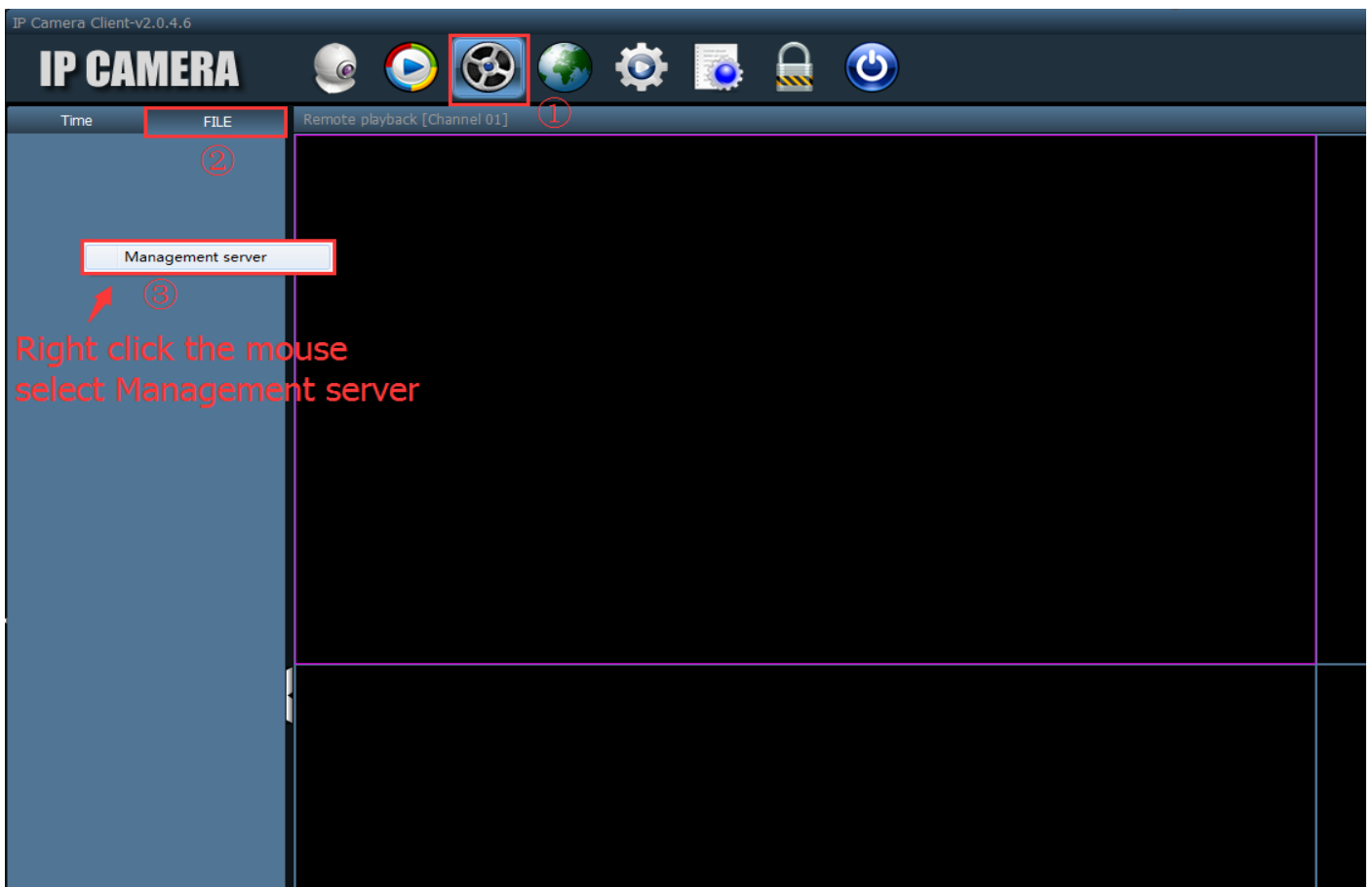
3, View your SD card record file in IE browser: go to click Play Back



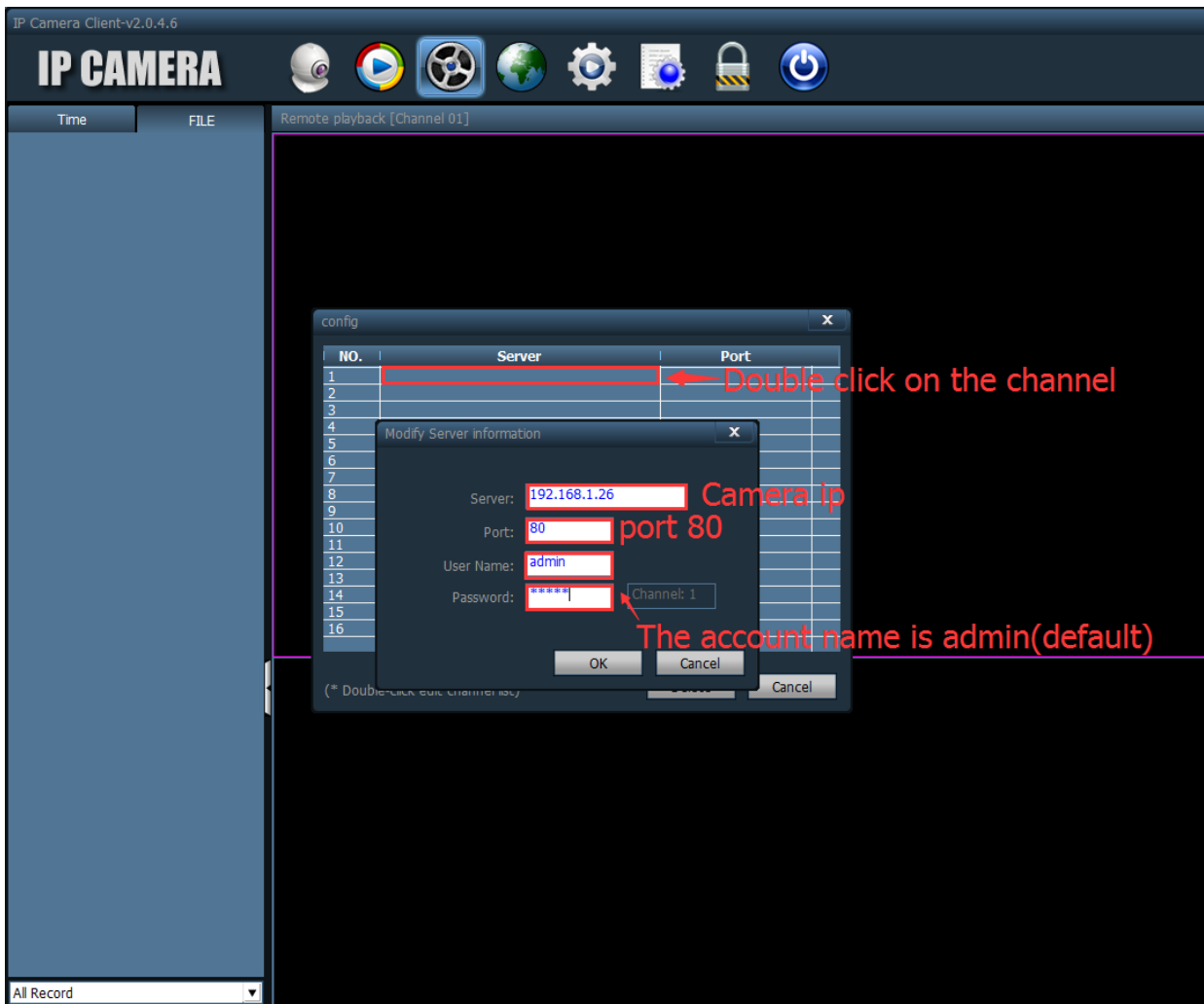
4. Select your record file check it



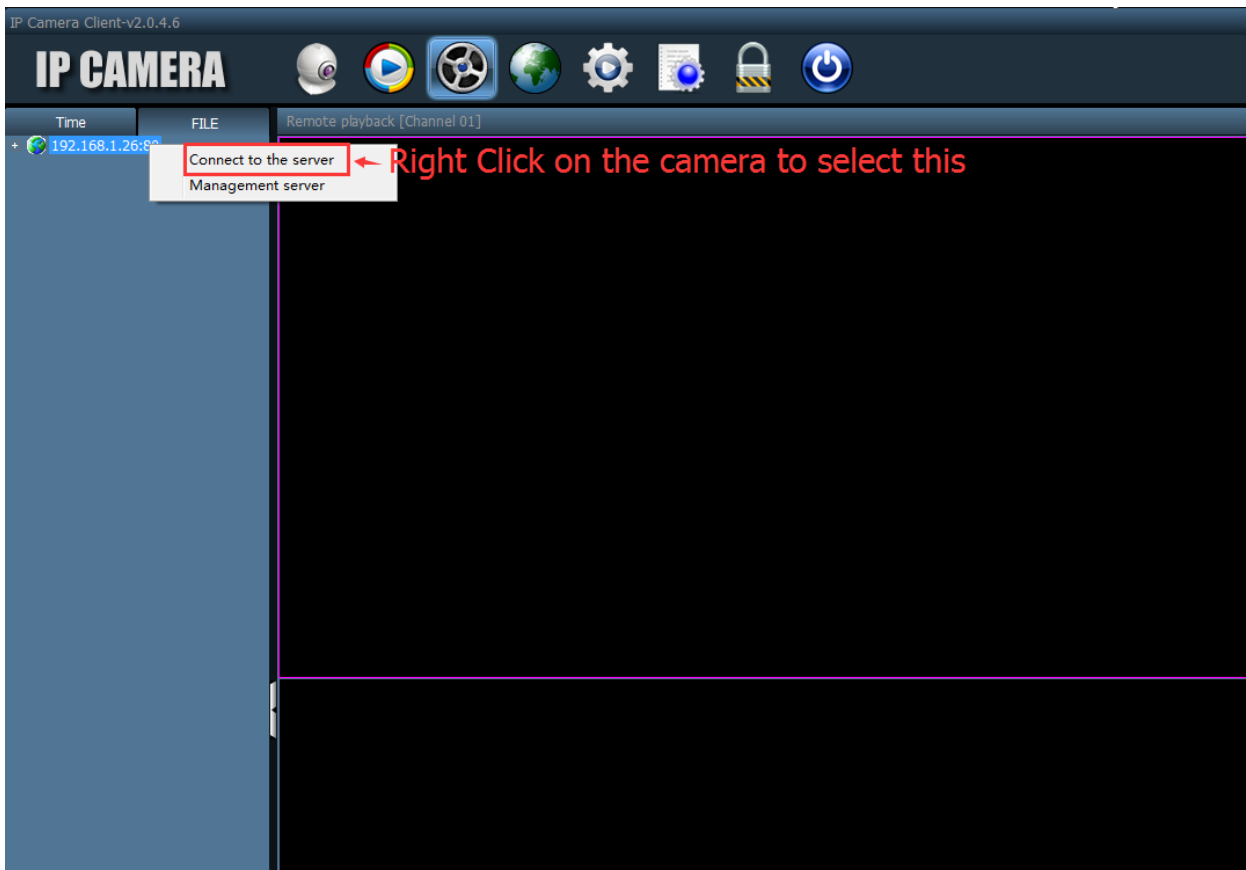
5. View your SD card record file in IP Camera Client, Click remote view- FILE- then click your right mouse



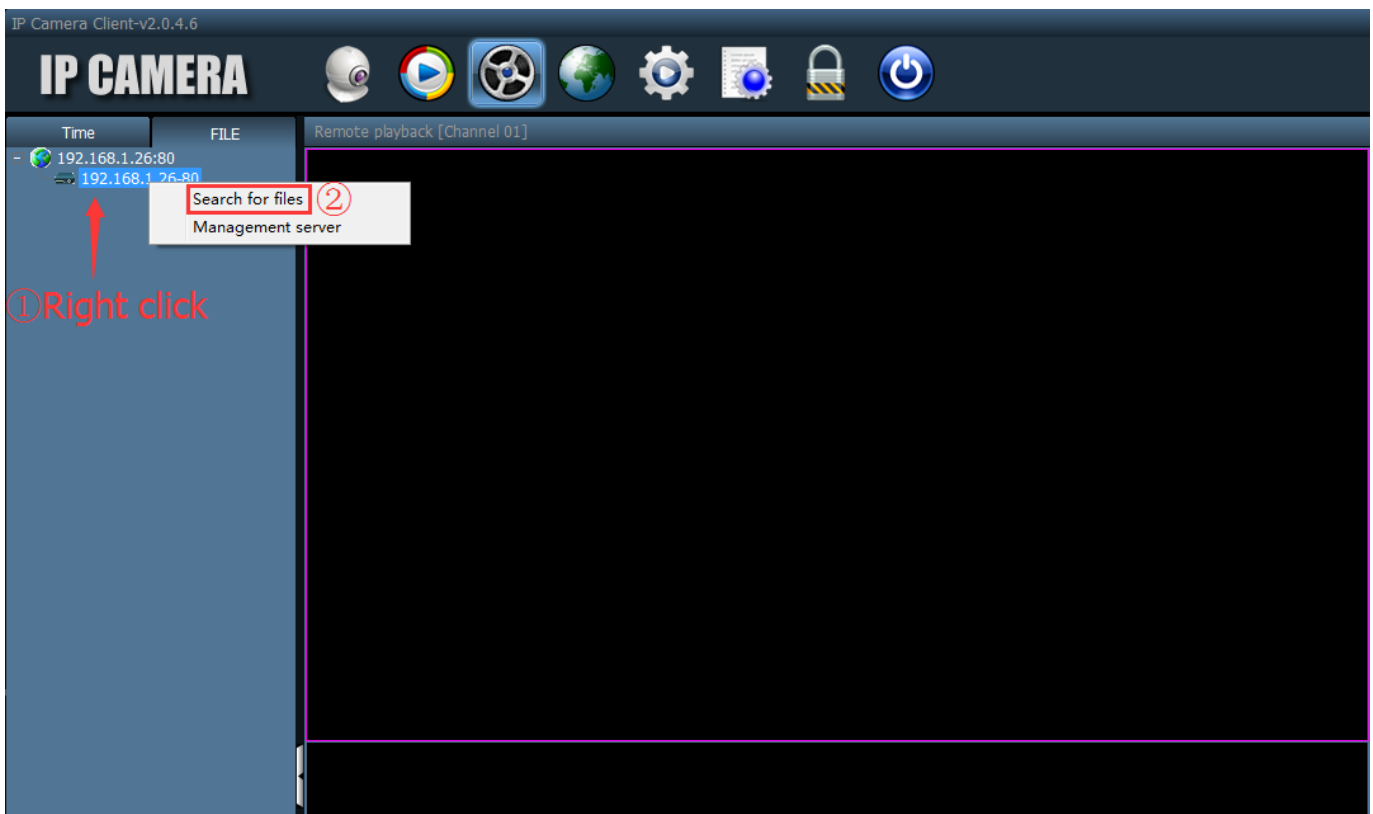
6. Double click the channel, put the Camera IP address, port: 80, account: admin, password: admin and then click ok (these are default information and if you have changed your camera of these parameters, you can put these according to your modified parameters)



7. Right click on the camera and go to select: Connect to the server



8. Right click Connected camera and select Search



9. Double click that can check your record file

IP Camera Client-v2.0.4.6

IP CAMERA

The interface features a top navigation bar with icons for camera, play, settings, globe, gear, document, lock, and power. Below the title bar, there is a table with two columns: 'Time' and 'FILE'. The 'FILE' column contains a list of file names in the format 'P170804_XXXXXX_XXXX'. The file 'P170804_111731_1118' is highlighted in blue. To the right of the table is a video playback window titled 'Remote playback [Channel 01]' showing a low-angle shot of a multi-story brick building under a cloudy sky.

Time	FILE
	P170804_103155_1032
	P170804_103255_1033
	P170804_103356_1034
	P170804_103457_1035
	P170804_103558_1036
	P170804_103659_1038
	P170804_103800_1039
	P170804_103900_1040
	P170804_104001_1041
	P170804_104102_1042
	P170804_104203_1043
	P170804_104304_1044
	P170804_104405_1045
	P170804_104506_1046
	P170804_104606_1047
	P170804_104707_1048
	P170804_104808_1049
	P170804_104909_1050
	P170804_105010_1051
	P170804_105111_1052
	P170804_105212_1053
	P170804_105313_1054
	P170804_105414_1055
	P170804_105515_1056
	P170804_105609_1057
	P170804_105616_1056
	P170804_105710_1058
	P170804_105810_1100
	P170804_110017_1101
	P170804_110117_1102
	P170804_110218_1103
	P170804_110319_1104
	P170804_110420_1105
	P170804_110521_1106
	P170804_110621_1107
	P170804_110722_1108
	P170804_110823_1109
	P170804_110924_1110
	P170804_111025_1111
	P170804_111126_1112
	P170804_111227_1113
	P170804_111327_1114
	P170804_111428_1115
	P170804_111529_1116
	P170804_111630_1117
	P170804_111731_1118

Remote playback [Channel 01]